

www.bestsub.com



JTrans® Easy

MULTI MUG PRESS-BIVOLT

USER MANUAL

Item No.: JTSB06-6



Item No.: JTSB06-6

Item Name.: Easy Multi Mug Press-Bivolt
 Power: 450W
 Voltage: Bi-voltage (220V / 110V)
 Temp. System: Celsius & Fahrenheit
 Temp. Range: 0~420 Fahrenheit; 0~200 Celsius
 Time Range: 0~800 Seconds
 Packing: Carton Packing
 Gross Weight: 12.5kg
 Measurements: 400×360×350mm

Description

The 6 in 1 digital mug press has been recognized as one of the most popular mug press machines. With digital and humanized functions, this machine is a perfect one for printing mugs. It is designed with six mug heaters, applicable for 1.5oz shot glass, 3oz mini mug, 11-15oz mug, 6-10oz mug, 12oz latte mug, 17oz latte mug printing. With these six sizes of mug heaters, you can imprint different sizes of mugs in a much more convenient way. The greatest improvement of this mug press is that its pressure handle has been made better for much more even pressing pressure.



JTPJB3



JTPJB4



JTPJB5



JTPJB6



JTPJB9



JTPJB10

Heater sizes

JTPJB3 Silicon Mug Wrap I for 11-15oz Mugs
 JTPJB4 Silicon Mug Wrap II for 6-10oz Mugs
 JTPJB5 Silicon Mug Wrap for 12oz Latte Mugs

JTPJB6 Silicon Mug Wrap for 17oz Latte Mugs
 JTPJB9 1.5oz Shot Glass Heater
 JTPJB10 3oz Mini Mug Heater

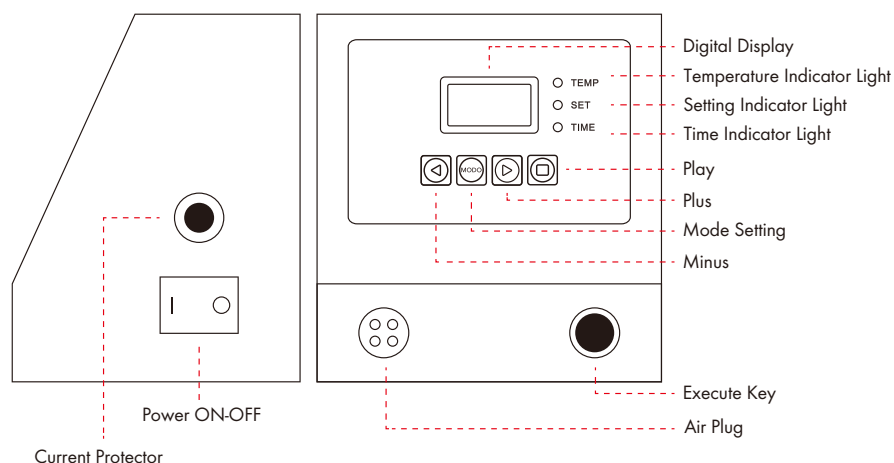


CE RoHS

Structure:

1	Pressure Handle	7	Plus
2	Pressure Adjustment Screw	8	Play
3	Silicon Mug Wrap	9	Current Protector
4	Digital Display	10	Power ON/OFF
5	Minus	11	Execute key
6	Mode Setting	12	Accessory Interface Port

Control Panel Operation



Instructions for Control Unit

1. Connect power cable.
2. Switch machine on.
3. All read outs are in Celsius.
4. To set the set-temperature press the mode button one time. Adjust the set-temperature with minus and plus button. Max set-temperature is 220°C.
5. Press the mode button for the second time for setting the highest-temperature. Usually this is a few degrees above the set-temperature. Adjust the highest-temperature with minus and plus button. Press the mode button for the third time to set the sublimation time. Adjust the sublimation time with minus and plus button.
- To confirm the temperature and time press the mode button for the fourth time.
6. Machine starts automatically to heat up to the set-temperature. When this temperature has been reached the machine will start to beep.
7. To start sublimation operation press the start button once. The machine will first heat up to the highest-temperature, when this has been reached the time count down will start.
8. When the operation is finished, the machine will give a long beep. This you can stop by pressing the start button again.
9. To unplug a press accessory always make sure the power is switched off and wait till the machine is cooled off. Press the safety catch on the left side of the control box to release the plug.

Item	Initial (F)	Highest (F)	Time (S)	Note
Mug	230 325	330 330	40 100	—Moderate / proper pressure —The temperature not too high.
Aluminum	230 280	315 315	20 100	—Moderate / proper pressure —The temperature not too high.
Glass Mug	230 325	330 330	40 100	—The temperature not too high.

1. Above time and temperature parameters are just for equipments made by our factory. It may be different from those of others.
2. The temperature is in "Fahrenheit".
3. Above parameters are only our suggestions from our own experience. You can try out the best from your own operation.

FAQS:

- A. The color is a little bit light: The temperature is too low, the pressure is uneven, or the time is too short.
- B. The picture is vague: The printing time is long, causing the spread of ink.
- C. The printing cover looks not brilliant: The pressure is too heavy or the temperature is too high.
- D. The print is partially vague: The heat of the pressing area is uneven.
- E. The print has some scar: The pressing time is too long.
- F. The print is in different colors: The pressure is uneven or the surface of the printing material is uneven.
- G. The paper is found sticky: The temperature is too high or the surface of the printing material is not so good.

NOTE:

1. Do not heat the machine without a mug in the heater in case of burnout. Do not touch the heating element directly without any protection in case of any hurt. If the machine works more than 1.5 hours, it is better to turn it off for 20 minutes' break.
2. We highly recommend you to set the highest temperature below 420 Fahrenheit or 200 Celsius to prolong the duration of the machine.